



Eclipse BIRT: The Open Source Reporting Framework

Paul Clenahan
Eclipse BIRT Project Management Committee
VP Product Management, Actuate Corporation

Jason Weathersby
Eclipse BIRT Project Management Committee
BIRT Evangelist, Actuate Corporation

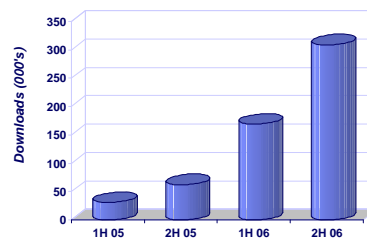
BIRT Project Introduction



BIRT Project = Business Intelligence and Report Tools Project

- Open source reporting developed as part of Eclipse platform & ecosystem
- Designed to be embedded in applications
- Two major components:
 - Visual report design tool for development
 - Runtime engine for deployment in Java applications
- Technology that makes simple reports easy to develop...
...but powerful enough to handle very complex report layouts

Average 79% Quarterly Increase in Downloads
Currently ~ 80,000 Downloads a Month



"From my research, BIRT is a really big deal, it has legitimate traction in the market."
Stephen O'Grady, RedMonk

BIRT and the Business Intelligence Spectrum



	Infrastructure					Business Intelligence					
	Data Integration and Quality	ETL	Database	Data Warehouse	Application Development	Operational Reporting	Dashboards & Reporting	OLAP Visualization	Business User Reporting	Performance Management	Data Mining & Predictive Analysis
Java Developers						Eclipse BIRT Report Project					
Report Developers											
Power Users						Eclipse BIRT Report Project					
End Users											

Eclipse Foundation, Inc. | © 2007 by Actuate Corporation and made available under the EPL v1.0

BIRT Project Key Capabilities



- Design environment is built on and integrated into the Eclipse IDE
- Ease of use using an innovative approach to report layout and design – a web page design paradigm
- Open and documented XML report design with no compilation required
- Advanced features for application integration
 - Full report scripting using Java and/or JavaScript
 - Use standard Cascading Style Sheets (CSS)
 - Comprehensive library support for reuse
 - ...
- Highly extensible architecture
 - Call custom business logic in Java or JavaScript
 - Add new and custom data sources (including query builder user interface)
 - Add new data visualizations as report items
 - Add new output formats for specific applications and devices
- Distributed using commercial-friendly Eclipse Public License (EPL)

Eclipse Foundation, Inc. | © 2007 by Actuate Corporation and made available under the EPL v1.0

What is BIRT Being Used For?



BIRT's flexibility supports very diverse applications:

- Personal desktop report development tool
- Reporting technology integrated into corporate web applications
- Reporting technology integrated into corporate desktop applications
- Reporting technology integrated into ISV web applications
- Reporting technology integrated into ISV Eclipse-based applications

Eclipse Foundation, Inc. | © 2007 by Actuate Corporation and made available under the EPL v1.0

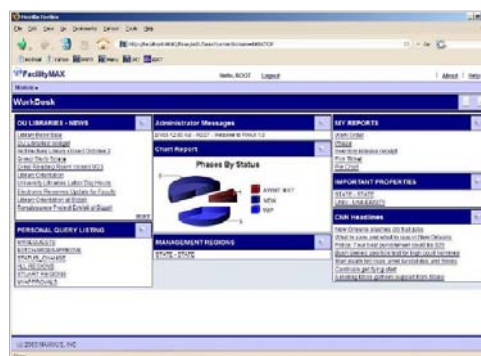
Case Study – MAXIMUS



MAXIMUS is a public company (NYSE: MMS) headquartered in Reston, Virginia, USA.

Leading government services company with over 5,200 employees providing consulting, systems and outsourcing services.

FacilityMAX is a web based application that enables organizations to improve, automate and integrate all of their facility management, asset management and maintenance operations. FacilityMAX has over 150 customers.



<http://www.assetsolutions.maximus.com>

Eclipse Foundation, Inc. | © 2007 by Actuate Corporation and made available under the EPL v1.0

Case Study – MAXIMUS



- BIRT is embedded in the FacilityMAX web application
- MAXIMUS selected BIRT because:
 - Low total cost of ownership
 - Solid technology and architecture
 - Comprehensive support for variety of report layouts
 - Ability to report on large volumes of data
 - Open standards, including 100% Java and J2EE standard
 - Support from the Eclipse project and large open source community
- BIRT reports include work order status and trends; facility and project budgets; and employee productivity
- Initial integration completed in a few days
- Reports created in real-time and can refresh automatically on application screen



“The BIRT Reports technology offers a significantly lower total cost of ownership and high-quality Web-based reports to our customers.”

*Trey Drake, Software Architect,
Asset Solutions Group at MAXIMUS*

Eclipse Foundation, Inc. | © 2007 by Actuate Corporation and made available under the EPL v1.0

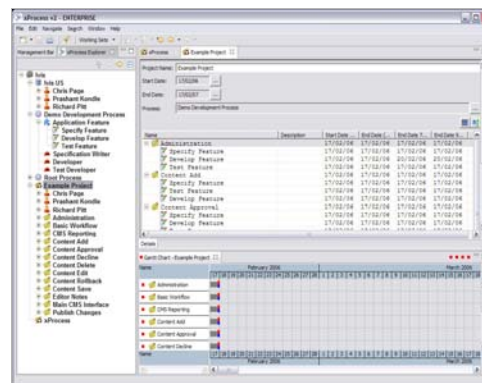
Case Study – Ivis Technologies



Ivis Technologies is privately held, based in Arizona, USA.

Build and sell software solutions that enable organizations to merge process improvement with live project execution.

xProcess is the premier process improvement and project execution environment that captures & creates processes, generates project plans and supports continuous process improvements



<http://www.ivis.com/public/products/xprocess>

Eclipse Foundation, Inc. | © 2007 by Actuate Corporation and made available under the EPL v1.0

Case Study – Scapa Technology



- BIRT runtime component is embedded in Scapa Test and Performance Platform
- Scapa application leverages the BIRT API to invoke the runtime component
- Users run reports & select the report layout, structure & visual preferences from within the Scapa user-interface
- BIRT runtime component adopts the look & feel of the Scapa application
- Built hooks within application that drive what the report should look like & create a report template programmatically

Sample Report 4
Execution History
Aggregated Data
Report generated at 2006/09/27 07:38:07

Type	Timer Name	Run Count	Fail Count	API Fail Count	Average	Max	Min	Standard Deviation	Std. Pctile
Execute	Total	27	0	0	1066.953	4417	1392	1066.003	4374.242
Execute	Iterations	120	0	0	2593.346	6187	1002	923.694	4263.825
Execute	Total	130	0	0	3804.524	9242	2474	1022.886	6147.332
Execute	Iterations	120	0	0	6044.078	9353	4006	1073.266	1065.517
Execute	Iterations	100	0	0	7844.144	13512	3276	1606.442	13031.849

Eclipse Foundation, Inc. | © 2007 by Actuate Corporation and made available under the EPL v1.0

BIRT Project Sample Adopters



Sample Adopters To Date Since BIRT 1.0 Released in June 2005



Eclipse Foundation, Inc. | © 2007 by Actuate Corporation and made available under the EPL v1.0